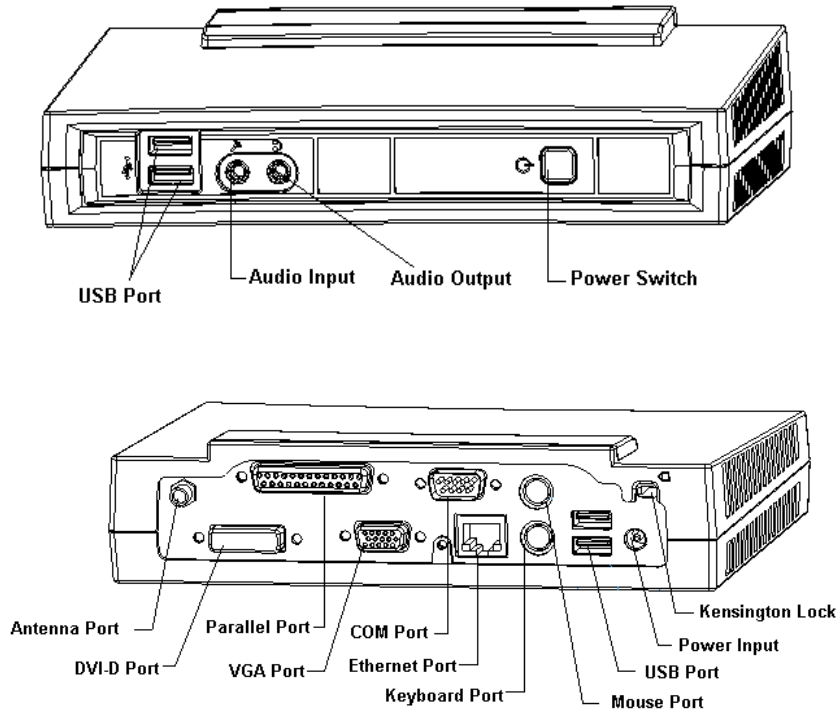
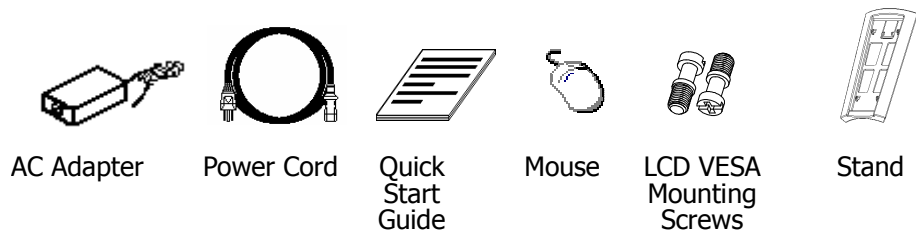


ST5500/ST6500 Thin Client Quick-Start Guide

ST5500 and ST6500 Hardware Layout:



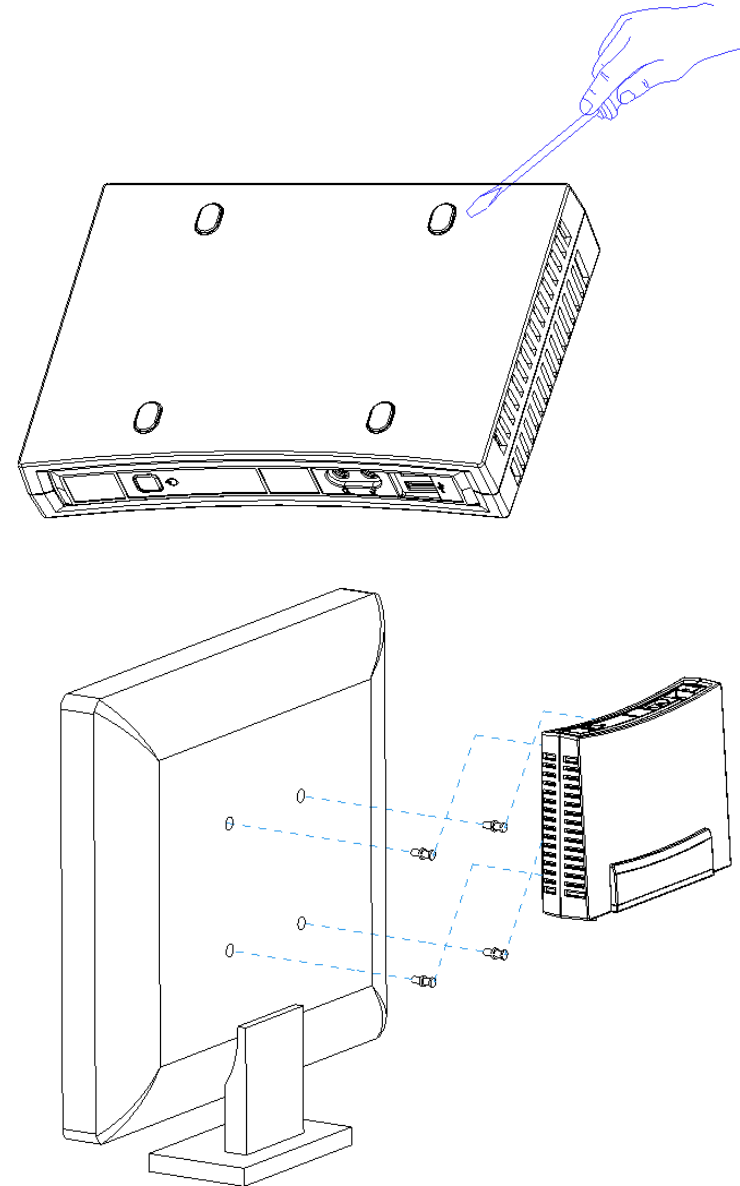
You should find the following equipment in the package:



Note: The included AC Adapter (power supply) output is +5v 4A. Use of any other power supply may damage the terminal and void the warranty.

Optional LCD monitor Assembly

The ST5500/ST6500 can be attached to the back of a LCD Monitor (VESA standard) using the LCD VESA mounting screws as illustrated below. Remove the four plastic knock-off tabs before attaching it to the LCD monitor.



Documentation

The operation of this thin client is described in the CLI Thin Client User Manual. If you have not obtained this manual, please do so now:

- Go to the CLI Web Site: www.computerlab.com
- Click **Technical Support** in the column at the left on the home page.
- Scroll down to **Documentation** and click **CLI Thin Client User Manuals**.
- Select the manual for the embedded operating system you are using (XPe, Linux or Windows CE).

Management Software

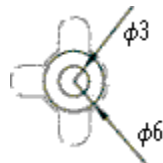
If you will be responsible for remote administration and have not yet obtained the CLI Thin Client SNMP Administrator thin client management software, do so now:

- From the **Documentation** menu (see above), click **CLI SNMP Administrator User Manual**.
- Request the SNMP Administrator software by email to: support@computerlab.com.
Include the serial number of the terminal in this email.

Special Notes:

The Wall Mount Screw dimension should not exceed the following:

- 1.1.) External Diameter 3mm
- 1.2.) Internal Diameter 6mm
- 1.3.) The length of Screw 2.8mm



Caution

There is a danger of explosion if the battery is incorrectly replaced. Replace only with the same or equivalent type recommended by the manufacturer. Dispose of used batteries according to the manufacturer's instructions.

FCC Statement

This device complies with Part 15 of the FCC Rules. Operation is subject to the following two conditions: (1) this device may not cause harmful interference; and (2) this device must accept any interference received, including interference that may cause undesired operation.

NOTE

This equipment has been tested and found to comply with the limits for a Class B digital device, pursuant to Part 15 of the FCC Rules. These limits are designed to provide reasonable protection. This equipment generates, uses and can radiated radio frequency energy and, if not installed and used in accordance with the instructions, may cause harmful interference to radio communications. However, there is no guarantee that interference will not occur in a particular installation. If this equipment does cause harmful interference to radio or television reception, which can be determined by turning the equipment off and on, the user is encouraged to try to correct the interference by one or more of the following measures:

- Reorient or relocate the receiving antenna.
- Increase the separation between the equipment and receiver.
- Connect the equipment into an outlet on a circuit different from that to which the receiver is connected.
- Consult the dealer or an experienced radio/TV technician for help.

The changes or modifications not expressly approved by the party responsible for compliance could void the user's authority to operate the equipment.