

ET5000T & ET4000T Quick Start Guide

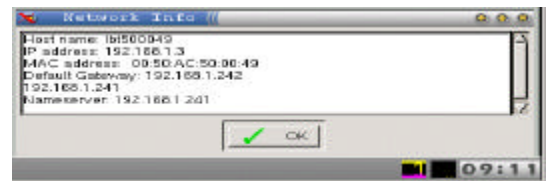
- ❑ On initial startup, the user level defaults to “root” access and all parameters can be modified. The Linux desktop will be displayed
- ❑ If Ethernet is disconnected or DHCP is not active, you will be presented with a logon prompt. Log in with the user ID: **root** with no password.
- ❑ System configuration parameters such as Network, Display, User and other parameters are configured in the “System Configure” panel
- ❑ Using the CLI SNMP Administrator management software you can backup/restore firmware image and configuration data. The management software can be obtained by sending a request to support@computerlab.com. Be sure to include the serial number of the terminal as part of your email.



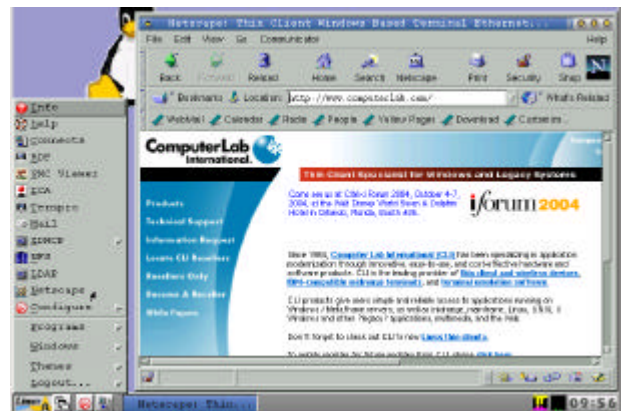
- ❑ Power off: Press **Alt+Ctrl+Del** and click **Shutdown**.
Reboot: Press **Alt+Ctrl+Del** and click **Reboot**.
Logout: Press **Alt+Ctrl+Del** and click **Logout**.



- ❑ To view the device Host Name, IP address, MAC address, gateway(s) and name server, double click on the Network Activity icon in the System information area on the bottom right of the display.



- ❑ All types of client connections are accessible from the Favorite Applications (start) button. Sessions can be configured and started from their individual program menu items. For example, to start the local browser, click: **Linux, Netscape**.



- ❑ All RDP, VNC, ICA, NFS, Emulation (TermPro); sessions which have been configured are accessible from the Connects menu item. This is convenient way to access all preconfigured sessions.

- ❑ Session types:
 - ? **RDP:** Windows Terminal Server
 - ? **VNC:** VNC Server
 - ? **ICA:** Citrix Terminal Server
 - ? **TermPro:** Legacy Host Servers including 5250, 3270 and UNIX
 - ? **Mail:** POP3 Mail server
 - ? **XDMCP:** Xwindows Server
 - ? **NFS:** NFS file system support
 - ? **LDAP:** Directory service
 - ? **Netscape:** Internet Browser

Shortcut Keys (HotKeys)

Window Switching:	Alt+Tab	Maximize window vertically:	Alt+Shift+F10
Raise window:	Alt+F1	Hide window:	Alt+Shift+F12
Occupy all:	Alt+F2	Rollup window:	Alt+F12
Lower window:	Alt+F3	Window menu:	Alt+Space
Close window:	Alt+F4	Next item:	Alt+Tab
Restore window:	Alt+F5	Last item:	Alt+Shift+Tab
Previous window:	Alt+Ctrl+Up	Next sys window:	Alt+Esc
Next window:	Alt+Ctrl+Down	Previous sys window:	Alt+Shift+Esc
Move window:	Alt+F7	Window menu:	Shift+Esc
Size window:	Alt+F8	Program menu:	Ctrl+Esc
Minimize window:	Alt+F9	Run:	Alt+Ctrl+r
Maximize window:	Alt+F10	Window list:	Alt+Ctrl+Esc
		XDM window:	Alt+Ctrl+F5, F6, F7, F8

Backup/restore firmware image and configuration data

Prerequisite: Use SNMP Administrator Management software (SNMPAdm build 189.1 or above).

From SNMPAdm Menu bar, click **File – Options – Remote Image** and set **Remote Image Path** to specify what is to be transferred: **all** = backup both binary image and configuration data; **data** = configuration data; and **image** = binary image.

Drag/drop client to/from **Remote Image** area.

Required EMAIL Configuration

Note: The terminal is shipped with the default configuration shown below. The mail client needs to be manually configured only after the terminal has been reset to default.

- Launch the Mail client
- Select: **Edit, Preferences, Mail & Newsgroups, Mail Servers.**
- Select the **Edit** button in the configured **Incoming Mail Server** section, deactivate the **Automatically download any new messages** option.
- Select the **POP** tab. Activate the following options: **Leave messages on server, When deleting a message locally, remove it from the server** and **Cleanup all folders on Exit.**
- In the left *Category* panel, select: **Copies & Folders**
- In the **When sending a mail message automatically** section, deactivate **Place a copy in folder: 'Sent' on 'Local Mail'**
- In the: **When sending a newsgroup message, automatically** section, deactivate **Place a copy in folder: 'Sent' on 'Local Mail'**
- In the left *Category* panel, select: **Formatting**
- In the **Message formatting** section, activate **Use the plain text editor to compose messages**
- In the **When sending HTML message to...** section, activate **Convert the message into plain text**
- In the left *Category* panel, select: **Disk Space**
- In the **All Messages** section, activate **Do not store messages locally that are larger than** and set the value to: **'5'** kb
- Activate **Automatically compact folders when it will save over** and set value to **'20'** kb
- In the **Newsgroups Messages Only** section, activate **Keep message which have arrived within the past** and set value to **'7'** days.